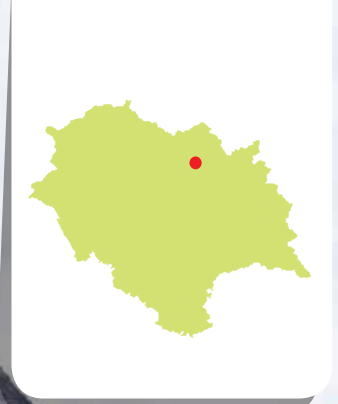
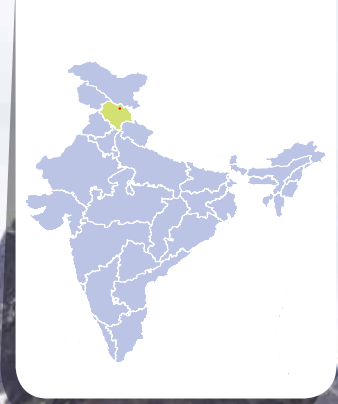


Chandertal Wetland

Himachal Pradesh



Wetlands International South Asia Photo Library

Date of Designation

November 8, 2005

Location

Lahaul & Spiti District

Area

49 hectares

Designation Criteria

2,3

Protection Status

Wildlife Sanctuary

Wetland Type

Freshwater lake

Management Authority

Himachal Pradesh Forest Department

Values and Benefits



Source of freshwater



Lifecycle Maintenance



Medicinal plants



Tourism & recreation



Carbon storage in Peatlands



Scientific and educational importance



Buffers flash floods



Cultural and spiritual value



Erosion prevention



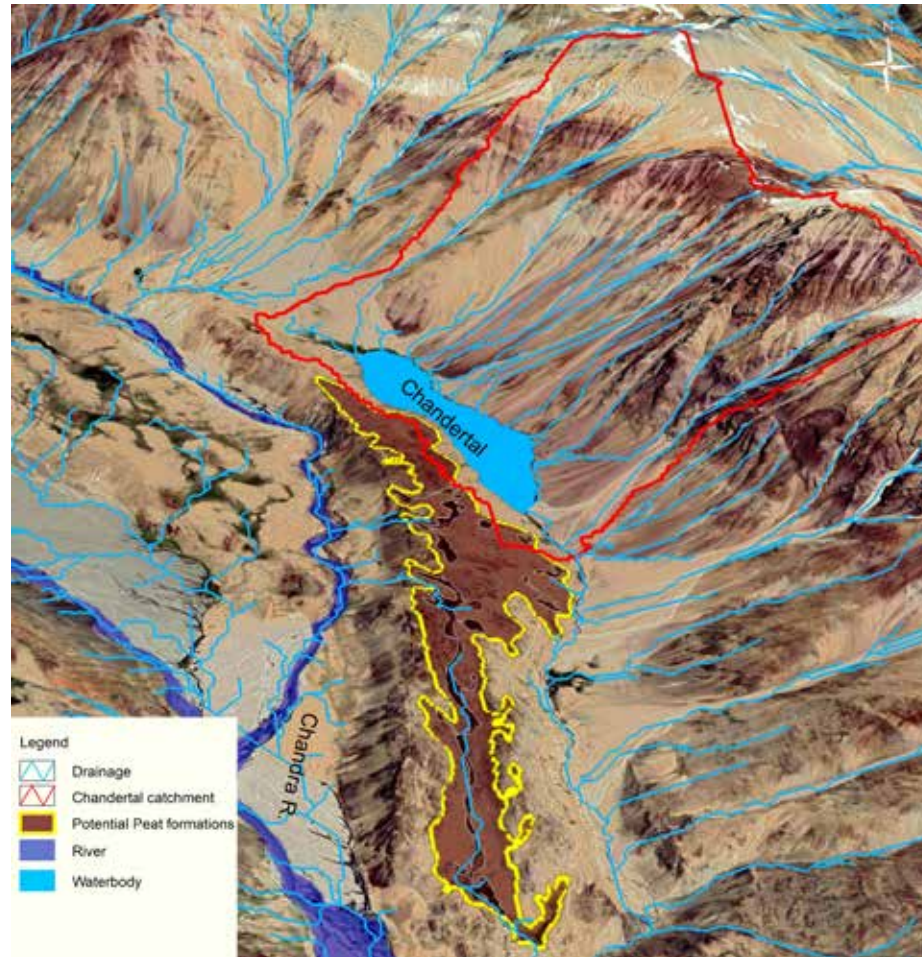
Recharges groundwater

Significance

Low Medium High

Significance

Low Medium High



Threats



Siltation



Solid waste



Over Grazing



Unsustainable tourism



Climate Change

Species richness

26 Birds

11 Mammals

28 Plants

Species of global conservation significance

Notable	Critically endangered	Endangered	Vulnerable
Snow Leopard, Tibetan Wolf, Himalayan Ibex, Ruddy Shelduck			Snow Leopard