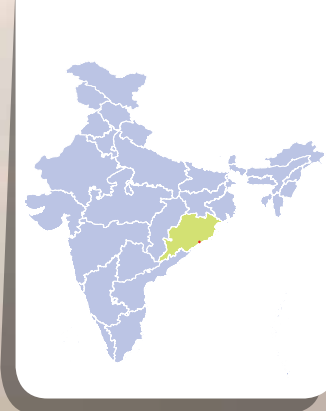


Chilika Lake

Odisha



K.R. Chandrasekhar

Date of Designation

October 1, 1981

Location

Puri, Khurda and Ganjam Districts

Area

1,16,500 hectares

Designation Criteria

2

Protection Status

15.5 km² island Nalabana designated as Bird Sanctuary

Wetland Type

Natural lagoon

Management Authority

Chilika Development Authority

Values and Benefits



-12,500 MT of commercial fish harvested annually



Stabilises Coastline



-10,000 MT of plants harvested annually



70% of migratory fish and 100+ intercontinental migrant waterbirds



Several medicinal and ornamental resources



Over 0.5 million tourists



10-17 t CO₂ blue carbon equivalent soaked by seagrass beds



Scientific and educational importance



Buffers communities from storms and cyclones



Kalijai temple and several historical sites



Purifies water

Significance

Low

Medium

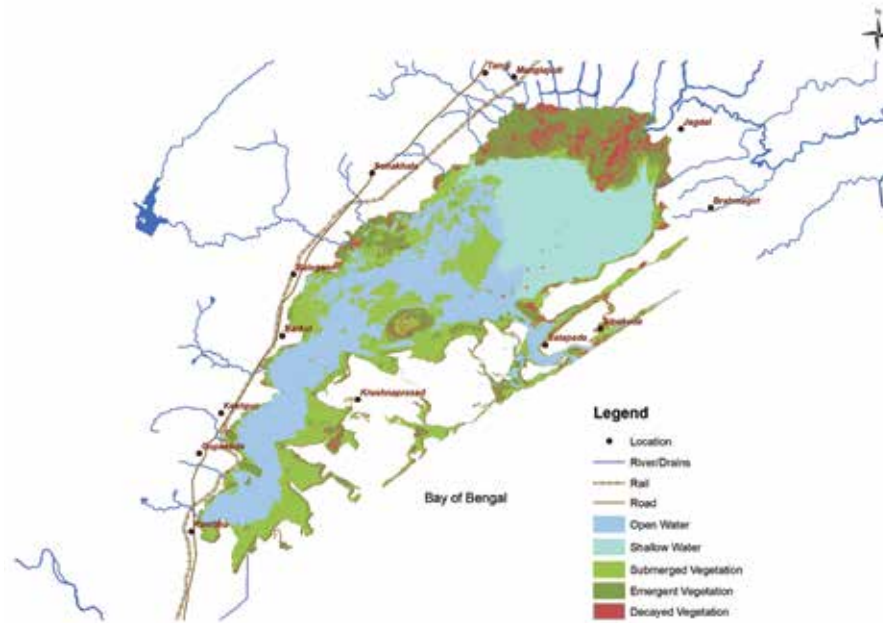
High

Significance

Low

Medium

High



Threats



Siltation



Extreme events changes lagoon mouth



Pollution from settlements



Illegal aquaculture



Unsustainable fish harvest



Phragmites in northern sector



Unsustainable tourism

Species richness

225 Birds

300+ Fishes

18 Mammals

37 Reptiles & Amphibians

900+ Plants

Species of global conservation significance

Notable	Critically endangered	Endangered	Vulnerable
Irrawaddy Dolphin	Scalloped Hammerhead, Smalltooth Sawfish, Ganges Shark	Irrawaddy Dolphin, Winghead Shark, Longhead Eagle Ray	Lesser White-fronted Goose, Indian Skimmer, Woolly-necked Stork, Great Knot, Common Pochard, Toli Shad, <i>Otolithes ruber</i>