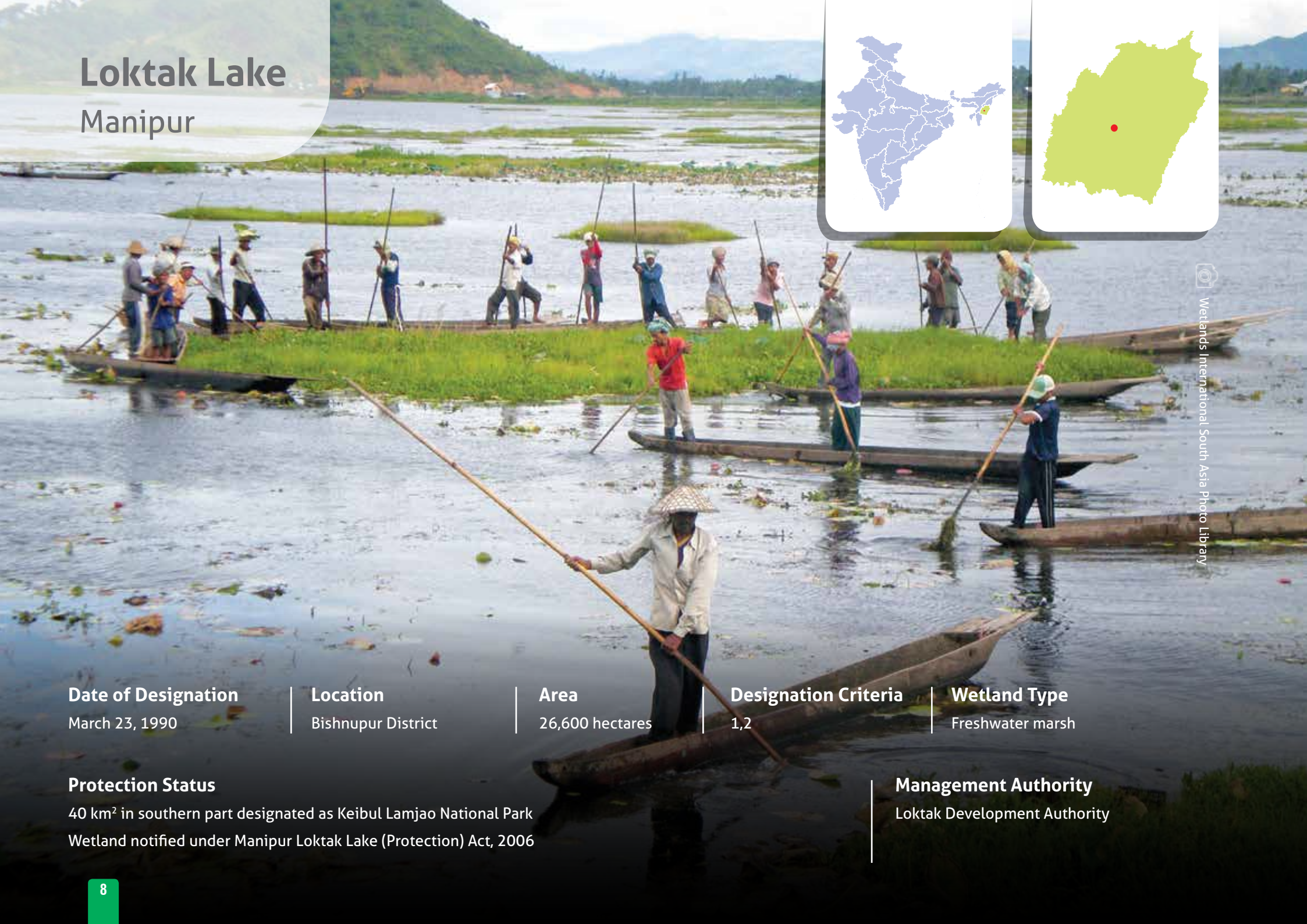
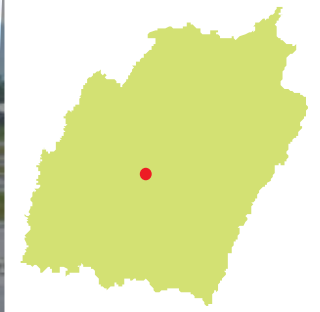
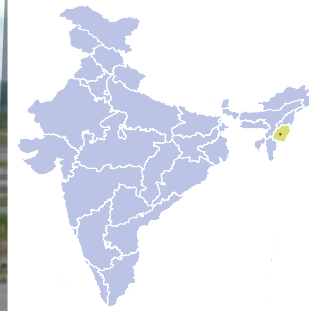


Loktak Lake

Manipur



Wetlands International South Asia Photo Library

Date of Designation

March 23, 1990

Location

Bishnupur District

Area

26,600 hectares

Designation Criteria

1,2

Wetland Type

Freshwater marsh

Protection Status

40 km² in southern part designated as Keibul Lamjao National Park
Wetland notified under Manipur Loktak Lake (Protection) Act, 2006

Management Authority

Loktak Development Authority

Values and Benefits



Source of drinking water



Purifies wastewater



Water for 105 MW hydropower



Groundwater recharge



Livelihood for 5,000 fishers



Lifecycle maintenance



Medicinal & ornamental plants



Tourism & recreation



Carbon sink



Scientific and educational importance



Protection from floods



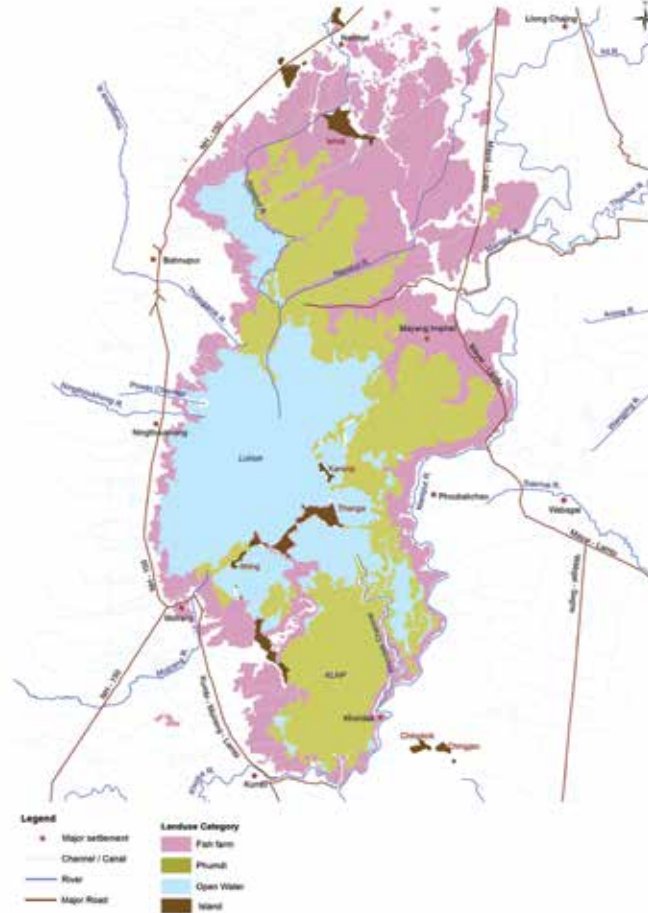
Revered as Loktak Ima

Significance

Low

Medium

High



Significance

Low

Medium

High

Threats



Water regime alteration by Ithai barrage



Siltation



Pollution



Unsustainable water abstraction for hydropower



Spread of Phumdi



Fragmentation by roads

Species richness

116 Birds

54 Fishes

22 Mammals

68 Reptiles & Amphibians

200+ Plants

Species of global conservation significance

Notable	Critically endangered	Endangered	Vulnerable
Manipur Brow Antlered Deer or <i>Sangai</i>		Manipur Brow Antlered Deer, Hog Deer, Dhole, Red Jasper Barb, Keelad Box Turtle	Lesser Adjutant, Sarus Crane, Common Pochard, Hooded Crane, Common Carp, Amboina Box Turtle, King Cobra, Burmese Python